



Upa

UPA is a first and largest year-round residential house designed for indoor living in the Woodsons series. The building's wall and ceiling panels are made from durable 5-layer WXP panels, insulated from the outside. The building features an open ceiling, adding spaciousness and roominess to the interior.

The well-thought-out interior design provides everything needed for a small family on nearly 60 square meters of living space. The building consists of an open kitchen with a living room, two separate bedrooms, and a bathroom with a sauna. The project includes a wooden terrace around the house.



TECHNICAL SPECIFICATIONS:

- Building footprint including the terrace: **88 m²**
- Roofed area: **59 m²**
- Building length x width: **9.8 x 6.0 m**
- Building ceiling height from floor: **2.3 – 3.16 m**
- Building roof peak height from ground: **3.46 m**
- Weight of the building wooden parts without the terrace: **12,000 kg**



EXTERIOR WALL LAYERS FROM OUTSIDE TO INSIDE:

- 19 mm – Painted cladding boards
- 100 mm – PIR insulation material or 100mm wood fiber insulation
- 90 mm – 5-layered WXP cross timber panel
- Inner layer of WXP panel painted with interior paint

Electrical wires are installed within the wall structure, so they are not visible in the interior.

INTERIOR WALLS:

- 90mm – 3- or 5-layered WXP cross timber panel
- Bathroom walls are constructed with a frame and plasterboard
- Sauna walls are made of thermo wood

ROOF AND CEILING FROM OUTSIDE TO INSIDE:

- Classic-style metal roof
- 150 mm – XPS insulation material
- 90 mm – 5-layered WXP cross timber panel
- Inner layer of WXP ceiling panel painted with interior paint





FURNITURE AND INTERIOR:

- Interior walls painted in color Y456 Coconut Tikkurila
- High-quality Hörmann interior doors
- Exterior door Jedlwen Basic 1400x 2100 mm

HEATING SYSTEM, WINDOWS AND OTHER EQUIPMENT:

- The building is equipped with an economical remote-controlled air-to-air heat pump for heating.
- Heat recovery ventilation valve PRANA 150
- 3x double-glazed plastic windows in dark gray
- Modern electric sauna heater
- Wooden-framed sauna window
- Water tap for gardening at the back of the house
- The house includes an electric car charging point



FLOOR LAYERS:

- **5 mm** – SPC vinyl floor covering (Stone-Plastic Composite) – Oak decor
- **3 mm** – Underlayment material
- **22 mm** – OSB board
- **200 mm** – Wooden floor structure with mineral wool insulation
- **22 mm** – OSB board

Sanitary pipes and electrical wires are installed within the floor to hide them from view in the interior.



UPA HOUSE PACKAGES:

UPA basic with Sauna

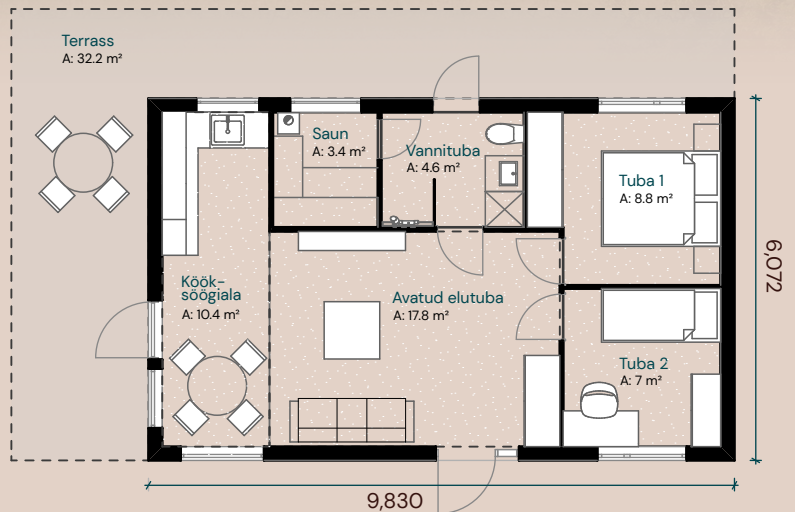
Price: 36 000 EUR + VAT

Includes: Assembled wooden panel modular of wall, floor and roof panels. Only floor frame with mineral insulation. Windows and front door added separately. All the other details and elements are excluded!

UPA finished with Sauna

Price: 82 900 EUR + VAT

Includes: Ready made house module for immediate living – insulation for walls and roof panels, facade lining board attached, treated and colored. Bathroom finished and equipped with WC and all sauna equipment. Electricity, plumbing, lightning – all installed and attached.



UPA basic without Sauna

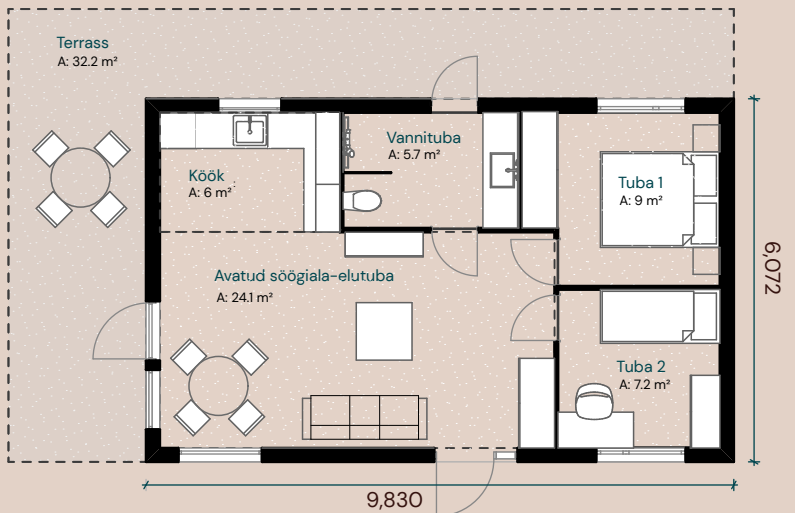
Price: 35 600 + VAT

Includes: Assembled wooden modular of wall, floor and roof panels. Floor frame with mineral insulation. Windows and front door added separately. All the other details and elements are excluded!

UPA finished without Sauna

Price: 80 000 EUR + VAT

Includes: Ready made house module for immediate living – insulation for walls and roof panels, facade lining board attached, treated and colored. Bathroom finished and equipped with WC and shower equipment. Electricity, plumbing, lightning – all installed and attached.



* The packages does not include building installation services, foundation, terrace, rainwater systems, awnings, and furniture

